

CERAMIC RESONATOR

ZTB Series, DIP and SMD Type



SCOPE

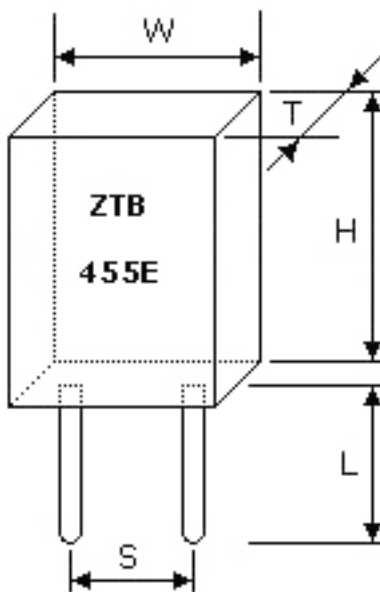
Ceramic Resonators - ZTB (KHz) Series is designed to provide the design engineer with a rugged, relatively low frequency device in the frequency range of 190 kHz to 1,250 kHz. Initial frequency tolerance is $\pm 0.5\%$ which compares very favorably to the nominal $\pm 2\% \sim \pm 3\%$ requirements of one chip microprocessors. GMK Ceramic Resonators - ZTB series utilizes the area vibration mode of the piezoelectric element.



TECHNICAL CHARACTERISTICS

Part Number		Frequency Accuracy(25°C)	Resonant Impedance	Frequency Stability	Aging for ten years	Capacitance	
DIP Type	SMD Type					C1	C2
ZTB190D-249D		$\pm 1\text{KHz}$	≤ 20	$\pm 0.3\%$	$\pm 0.3\%$	330	470
ZTB250D-374D		$\pm 1\text{KHz}$	≤ 20	$\pm 0.3\%$	$\pm 0.3\%$	220	470
ZTB375P-429P	ZTB375-429Y	$\pm 2\text{KHz}$	≤ 20	$\pm 0.3\%$	$\pm 0.3\%$	120	470
ZTB430E-509E	ZTB430-509Y	$\pm 2\text{KHz}$	≤ 20	$\pm 0.3\%$	$\pm 0.3\%$	100	100
ZTB510P-699P	ZTB510-699Y	$\pm 2\text{KHz}$	≤ 30	$\pm 0.3\%$	$\pm 0.3\%$	100	100
ZTB700J-999J	ZTB700-999Y	$\pm 0.5\%$	≤ 70	$\pm 0.3\%$	$\pm 0.3\%$	100	100
ZTB1000J-1250J	ZTB1000-1250Y	$\pm 0.5\%$	≤ 100	$\pm 0.3\%$	$\pm 0.3\%$	100	100

DIMENSIONS (Unit: mm Tolerance: $\pm 0.3\text{mm}$)



Frequency Range(KHz)	W Width	T Thickness	H Height	S Lead Space	L Lead Length
190-249	13.5	3.8	14.7	10.0	8.0
250-374	11.0	3.8	12.2	7.7	7.0
375-429	7.9	3.6	9.3	5.0	7.0
430-699	7.0	3.5	9.0	5.0	4.0(6.0)
700-1250	5.2	2.8	6.8	2.5	3.5(5.0)

Great Marking (HK) Industry Co., Limited.

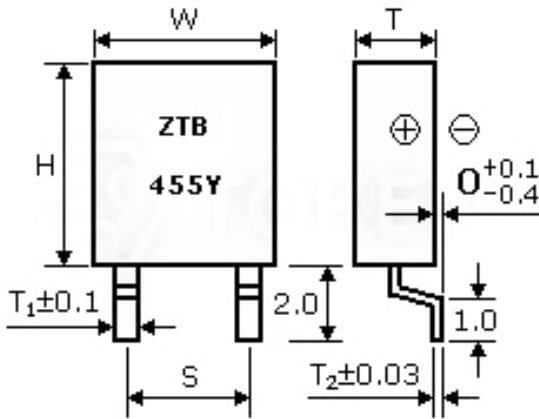
Add: Unit 27EF, the Sky Castle, North of Jingtian, Futian District, Shenzhen 518034 CHINA

Tel: +86-755-83056036 83056901 83056902 Fax: +86-755-83056903

E-mail: sales@greatmarking.com Url: www.greatmarking.com

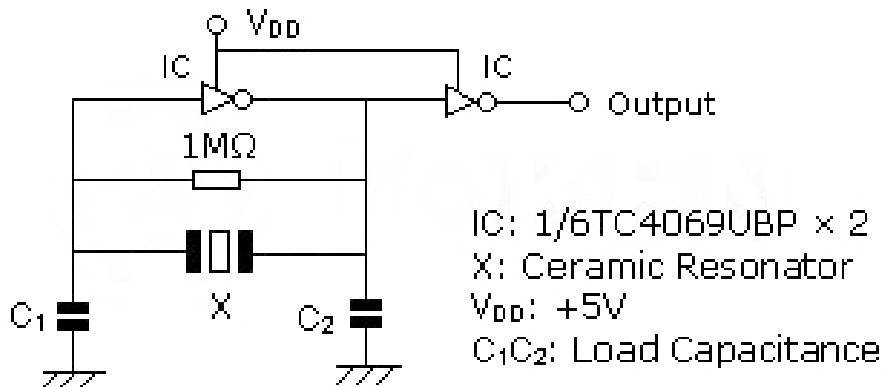
CERAMIC RESONATOR

ZTB Series, DIP and SMD Type

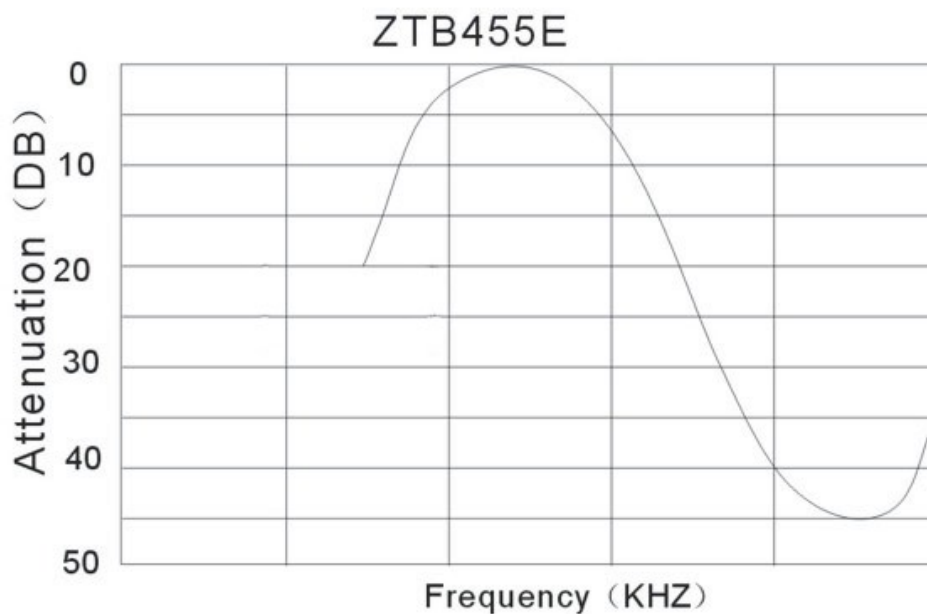


Frequency Range(KHz)	W Width	T Thickness	H Height	S Lead Space	T ₁	T ₂
375-429	8.0	3.5	9.0	5.0	1.0	0.15
430-509	7.5	3.3	8.5	5.0	1.1	0.15
510-699	7.0	3.0	8.5	5.0	1.1	0.15
700-1250	5.0	2.2	6.0	2.5	0.8	0.12

TEST CIRCUIT



CHARACTERISTICS



Great Marking (HK) Industry Co., Limited.

Add: Unit 27EF, the Sky Castle, North of Jingtian, Futian District, Shenzhen 518034 CHINA

Tel: +86-755-83056036 83056901 83056902 Fax: +86-755-83056903

E-mail: sales@greatmarking.com Url: www.greatmarking.com